



## HP QuickTest Professional software

Data sheet



HP QuickTest Professional software is advanced, automated testing software for building functional and regression test suites. It captures, verifies and replays user interactions automatically and helps testers quickly identify and report on application effects, while providing advanced functionality for tester collaboration.

### Simplify test creation and maintenance

HP QuickTest Professional software provides functional and regression test automation for major software applications and environments, including next-generation development technologies, such as Windows® Presentation Foundation, web services, Macromedia Flex, .NET, J2EE and ERP, and CRM applications.

HP QuickTest Professional offers a fresh approach to automated testing: it deploys the concept of keyword-driven testing to radically simplify test creation and maintenance. Using keyword capabilities, your testers can build test cases by capturing flows directly from the

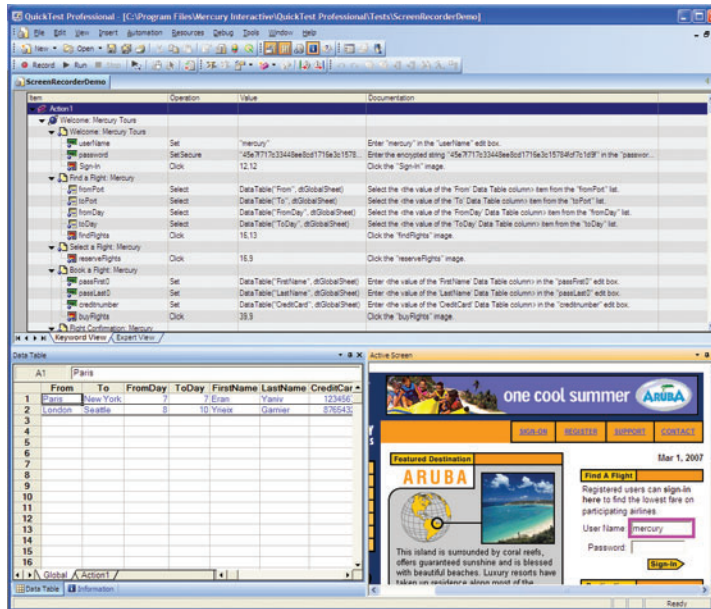
application screens and applying robust capturing technology (record/replay). In addition, your power users get full access to the underlying test and object properties through an integrated scripting and debugging environment that is synchronized with the Keyword View capability for your complete testing cycle.

With HP QuickTest Professional, your Quality Assurance (QA) organization can:

- Empower the entire team to create sophisticated test suites with less training
- Establish correct functionality across all environments, data sets and business processes
- Fully document and replicate defects for developers, helping them fix defects faster and meet production deadlines
- Easily regression test ever-changing applications and environments
- Deliver quality products and services and improve revenues and profitability
- Enable tester workgroups to share automated testing assets across teams

## Easy to use

Using the Keyword Views, Auto-documentation and Active Screen features, you can create and modify test scripts without having to write a single line of code.



## How HP QuickTest Professional works

HP QuickTest Professional allows even novice testers to be productive in minutes. You can create a test by using the script-free Keyword View feature and simply declaring the test steps. QuickTest Professional also lets you capture test steps via an integrated recording capability. The product documents each step in simple language and displays an integrated screenshot via the Active Screen feature.

Unlike traditional scripting tools that produce scripts that are difficult to modify, HP QuickTest Professional's keyword-driven approach lets you easily insert, modify, data-drive and remove test steps.

HP QuickTest Professional also addresses new application builds. When an application being tested changes, such as renaming a "Login" button to "Sign In," you only need to update one reference in an XML-based Shared Object Repository (within the Object Repository Manager feature), and the update is propagated to all tests that reference this object. You can publish test scripts to HP Quality Center software, allowing other QA team members to reuse your test scripts and eliminating duplicate work.

HP QuickTest Professional supports functional testing for enterprise environments, including web services, Windows applications, web (Internet Explorer, Firefox, Netscape), .NET, Java™/J2EE, SAP, Siebel, Oracle®, PeopleSoft, Visual Basic, ActiveX, mainframe terminal emulators and Macromedia Flex.

### Collaborate across workgroups

HP QuickTest Professional has been designed for test automation collaboration among tester workgroups. It includes technology for managing application definitions or objects in the Object Repository Manager. Based on an open XML format, the Object Repository Manager lets HP QuickTest Professional users collaborate and share application object definitions. HP QuickTest Professional keeps object-level changes synchronized among users throughout test creation efforts.

In addition, you can define object repositories before an application is available to QA. Users can also share function libraries, application asset definitions and data-driven spreadsheets across tester workgroups.

### **Get functional and regression test automation**

HP Functional Testing software combines HP QuickTest Professional and HP WinRunner software into a single integrated solution for comprehensive functional and regression test automation, supporting enterprise software applications and environments. HP Functional Testing leverages the integration between HP QuickTest Professional and HP WinRunner, so that each product can call scripts of the other, and test results are reported into a common reporting interface.

### **Combine automated and manual testing**

You can leverage your investment in HP QuickTest Professional with HP Business Process Testing software, which provides functional test case design for both automated and manual testing. HP Business Process Testing enables non-technical subject-matter experts to become an integral part of the quality optimization process. It automates the creation of test plans and streamlines test maintenance for application change.

HP Business Process Testing reduces the overhead for automated test maintenance and combines test automation and documentation into a single effort. It lets subject-matter experts and business managers measure the quality of application deliverables from abstract business definitions defined within the HP Business Process Testing framework.

HP Business Process Testing also improves productivity by enabling business analysts and quality engineers to collaborate effectively. With this role-based solution, subject-matter experts can focus on creating high-level test flows that mirror actual business process, while quality engineers can concentrate their efforts beyond enabling automation.

### **Part of HP Quality Center**

HP QuickTest Professional is part of HP Quality Center software, an integrated set of capabilities and best practices for automating key quality activities, including requirements management, test management, defect management, functional testing and business-process testing.

### **Easy to use**

Using the Keyword Views, Auto-documentation and Active Screen features, you can create and modify test scripts without having to write a single line of code.

### **Key features and benefits**

- Helps provide immediate ROI through industry-leading ease of use and pre-configured environment support
- Operates standalone or integrated with HP Business Process Testing and HP Quality Center
- Enables collaboration among workgroups with shared function libraries, robust object management and flexible asset storage within HP Quality Center
- Features next-generation, “zero-configuration,” keyword-driven testing technology—allowing for fast test creation, easier maintenance and more powerful data-driving capability
- Identifies objects with Unique Smart Object Recognition, even if they change from build to build, for reliable and unattended script execution
- Manages multiple object repositories with ease to facilitate building automated frameworks and libraries
- Handles unforeseen application events with Recovery Manager, facilitating 24x7 testing to meet test project deadlines
- Reduces time to resolve defects by automatically reproducing defects and identifying problems with the built-in test execution recorder
- Collapses test documentation and test creation into a single step with Auto-documentation technology
- Easily data drives any object definition, method, checkpoint and output value via the Integrated Data Table
- Provides a robust, highly configurable IDE environment for QA engineers
- Preserves your investments in HP WinRunner by leveraging existing WinRunner test scripts written in the Test Scripting Language through integration with HP QuickTest Professional and HP WinRunner
- Rapidly isolates and diagnoses defects with integrated reports that can be exported into XML and HTML formats
- Enables thorough validation of applications through a full complement of checkpoints
- Provides Unicode support for multi-lingual application testing

## A complete solution

### **Comprehensive training**

HP provides a comprehensive curriculum of HP Software and IT Service Management courses. These offerings provide the training you need to realize the full potential of your HP solutions, increase your network optimization and responsiveness, and achieve better return on your IT investments.

With more than 30 years experience meeting complex education challenges worldwide, HP knows training. This experience, coupled with unique insights into HP Software products, positions HP to deliver a better training experience. For more information about these and other educational courses, visit:

[www.hp.com/learn](http://www.hp.com/learn)

### **The smartest way to invest in IT**

HP Financial Services provides innovative financing and financial asset management programs to help you cost-effectively acquire, manage and ultimately retire your HP solutions. For more information on these services, contact your HP sales representative or visit:

[www.hp.com/go/hpfinancialservices](http://www.hp.com/go/hpfinancialservices)

## Contact information

To find an HP Software sales office or reseller near you, visit: [www.managementsoftware.hp.com/buy](http://www.managementsoftware.hp.com/buy)

## HP Services

Get the most from your software investment

HP provides high-quality software services that address all aspects of your software application lifecycle needs. With HP, you have access to standards-based, modular, multi-platform software coupled with global services and support. The wide range of HP service offerings—from online self-solve support to proactive mission-critical services—enables you to choose the services that best match your business needs.

For an overview of HP software services, visit:

[www.managementsoftware.hp.com/service](http://www.managementsoftware.hp.com/service)

To access technical interactive support, visit Software Support Online at: [www.hp.com/managementsoftware/services](http://www.hp.com/managementsoftware/services)

To learn more about HP Software Customer Connection, a one-stop information and learning portal for software products and services, visit: [www.hp.com/go/swcustomerconnection](http://www.hp.com/go/swcustomerconnection)

Java is a U.S. trademark of Sun Microsystems, Inc. Microsoft and Windows are U.S. registered trademarks of Microsoft Corporation. Oracle is a registered U.S. trademark of Oracle Corporation, Redwood City, California.

© Copyright 2007 Hewlett-Packard Development Company, L.P. The information contained herein is subject to change without notice. The only warranties for HP products and services are set forth in the express warranty statements accompanying such products and services. Nothing herein should be construed as constituting an additional warranty. HP shall not be liable for technical or editorial errors or omissions contained herein.

To learn more, visit [www.hp.com/software](http://www.hp.com/software)

4AA1-2116ENW, May 2007

